

Take Your Time and Enjoy the Slow Life

GETA

JCS-KM-GS1001
CONCEPT 01

Take Your Time and Enjoy the Slow Life

It is said that the Japanese traditional footwear "Geta" and "Setta" creates natural postures without straining as you stand, walk and move. Balance with the whole body is necessary while wearing Geta . Once you have obtain this balance then you will be able to move in a relaxed state which brings about calm. You must take your time... do not rush. Wear the Geta and to enjoy a relaxing time.



GETA

Walking in a GETA

The Japanese people before Edo period walked in Kimono with different types of foot ware called Geta", "Zori", "Waraji" or "Setta", and each of the footwear has a "Hanao", which is the cloth thongs that hold the straps and the base of the Geta. Depending on the occasion, the occupation and age they wore different foot are/ sandals.

The basics of the walking in a GETA

- 1) Like sandals place the "Hanao" in the first and second toe and put your weight in front of your feet as though you are tiptoeing.
- 2) As you walk you will move forward and again you toes will go forward.
- 3) When you incline, the upper part of your body forward or your leg will step forward naturally. You should not step forward by kicking the ground but walk with a shuffle.

It will come naturally once you have tried them but the important aspect is to shuffle your feet and not to kick off.



GETA

Wearing of traditional Japanese footwear

When wearing Kimono, one will naturally wear a traditional Japanese footwear such as Geta, Setta and Zori.

Many people, including the Japanese, who have worn shoes have difficulty when wearing a Geta or Setta, many say that there is pain or develop blisters on their feet and it's difficult to walk in. Of course, this is true for any sandals.

There are two major reasons for this:

1 The space of the Hanao does not fit your feet

Recently, most of the Geta and Setta sold in Japan have thongs called Hanao already fixed on the base of the Geta or Setta.

Originally, and quality made Geta, one would choose the base of the footwear, and the skilled craftsman would fix the Hanao tailored to your feet. Geta and Setta with Hanao fixed from the beginning, like any shoes it may not fit your foot, and it will cause an abrasion and blisters.

It is best to have the "Hanao" fixed by a Geta tailor.

2 As noted one does not walk in Geta the same way as one walk in shoes

First, remember the two following points:.

1) Different from shoes, the traditional Japanese footwear such as Geta or Setta, your heel should stick out about 2-3 centimeters (1-1.5 inches) from the base. (The purpose is to not entangle the hem of the Kimono.)

2) The Hanao comes between your big toe and second toe. Leave a little space between the Hanao and the toes. If you put the Hanao deep in between the toes, the may cause abrasion.

The unique way to walking in Geta is, first bend your knees a little and relax your legs. To walk, do not kick the ground with the Geta, but tilt forward from an upright position, and place the front of the Geta on the ground. At the same time, place the other leg (Geta) parallel on the floor. in other words, make your body as relaxed as possible, transfer your weight forward, and move forward using the tilt of the Geta.



Take Your Time and Enjoy the Slow Life

GETA

JCS-KM-GS1001

A tale of Japan's
best Geta made of paulownia 02

Aizu paulownia wood

For the GETA or the Japanese clogs generally paulownia wood is used. The paulownia wood is known to be light in weight and a beautiful white color. Not only is the wood light in weight but also soft in touch and has a low thermal conductivity, therefore has the advantage of not feeling the cold; for these reason paulownia has been used as material for shoes in Japan for quite a long time.

Among the domestic paulownia Fukushima Prefecture Aizu region is referred to as the "Aizu Kiri" and has a history of over 300 years. Above all it is the most valuable and finest quality in terms of aesthetics.



The cold climate of the suitable for the best paulownia materials



The drying process of the paulownia wood



Take Your Time and Enjoy the Slow Life

GETA

JCS-KM-GS1001

A tale of Japan's
best Geta made of paulownia 03

Reason Aizu paulownia is the most exclusive

The features in which Aizu paulownia is the finest quality:

The material is dense, shiny and with moderate hardness

Annual ring is clear and the wood grain is very beautiful

The reason for the good quality of paulownia can be found in the climate of the Aizu in which the paulownia grown.

Aizu is located in the northern part of Japan and it belongs to the region of severe cold with a large amount of snow during the winter.

It is said that KIRI/paulownia grown in cold climates will grow into a beautiful tree with clear rings compared to paulownia grown in the warm climate.

If you look at the cross-section of the tree, the width between the rings is even and alternately the colors of the rings are thin then thick in color tone.

The difference in color tone is made from summer to autumn; the period of growth in the spring and summer the thin portion of the color is called "Natsume" and the dark part of the color is called "winter day". The repeated change of the seasons in this way, appear as concentric rings in cross-section of the tree and the more cold the winter climate, the "Winter Eyes" becomes more clear as the line color changes to a darker thin width, which appears as the beautiful wood grain rings. Also, the dark part of the color or the "winter day", the density is higher because they are formed at a time when tree growth is suppressed and gives an appropriate strength but also the light weight in the wood. For these reasons the Aizu paulownia has earned a reputation to be the finest.

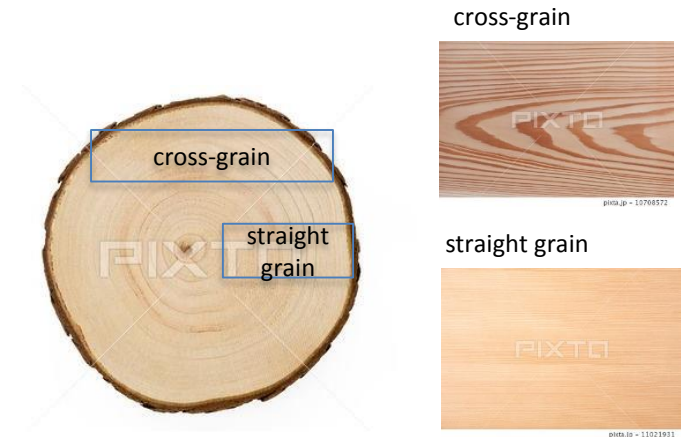


GETA

The cross-grain and straight grain for clogs

The GETA comes in two different types of wood patterns "cross-grain" and "straight grain".

The "straight grain" pattern in the wood is taken from the wood in which the rings becomes parallel or where it is straight; on the other hand, the "cross-grain" pattern of the tree rings appear in a spiral pattern. The difference in pattern is how you cut the plate of the log. The "straight grain" is cut perpendicular to the growth rings and a "cross-grain" is tangential direction along the eye of the rings. Since the old days the Japanese has been particularly fond of the straight grain. The straight grain cut can be seen in many of the interior of the old Japanese-style buildings. The reason for the preference of the straight grain is the advantage in functionality which is strong to warping and shrinkage compared to the cross-grain; also clean pattern of the fine straight grain appeals to the Japanese sense of beauty.



Made of one block of wood material, each straight grain fits in line perfectly.

GETA

GETA made with Aizu straight-grained paulownia wood.

This special Geta made of Aizu straight-grained paulownia wood, is totally different from the other clogs in terms of how it is made. Our Geta is made by one of the most renowned expert craftsmen who carves the Geta from one block of wood. This kind of Geta has been called "Senryo" and it was originated by a request from a Kabuki actor. For this reason the "Senryo Geta" is known for its beautiful shape and style. The quality and fit is so comfortable, that in general the Geta will fit all sizes, in general 26 cm Large in Japan. However, we have asked the craftsman to have a larger size which will fit sizes from 29cm to 32cm, in our hope that more people worldwide can enjoy this Geta made of straight-grained wood of Aizu Paulownia.

material: Aizu Paulownia. hand crafted in Japan
Medium size 26 cm
Large size 28 cm



Medium size (26cm to 28cm) and Large size 29cm to 32cm)



As shown in the photo the Geta is carved differently than what can be normally found making the design as a whole beautiful and also more comfortable to wear.

GETA

No.	name	size	net weight	material
GS1001-M	GETA 'senryo'	Midium 26 cm	595g	Aizu paulownia
GS1001 L	GETA 'senryo'	Large 28 cm	620g	Aizu paulownia

Please note that because the skilled craftsman makes Geta one by one from a block of Aizu Paulownia of straight grain, each weight and grain pattern are a little different.





Japanese Culture & Style

Japanese Culture & Style Corp.

CEO : Kojiro Yamanaka

COO : Osami Kitazono

atelier108, 4-11-12, Tezukayamanishi, Sumiyoshi-ku, Osaka, Japan 558-0052

Email info@japaneseculturestyle.com

Phone +81-6-6678-6640

Facsimile +81-6-6671-6990

website

www.japaneseculturestyle.com

Facebook

www.facebook.com/japaneseculturestyle